



Advanced Lot Trace

Enhanced lot trace capabilities to trace by time with advanced analysis and reporting, improving responsiveness and reducing risk

Key Benefits

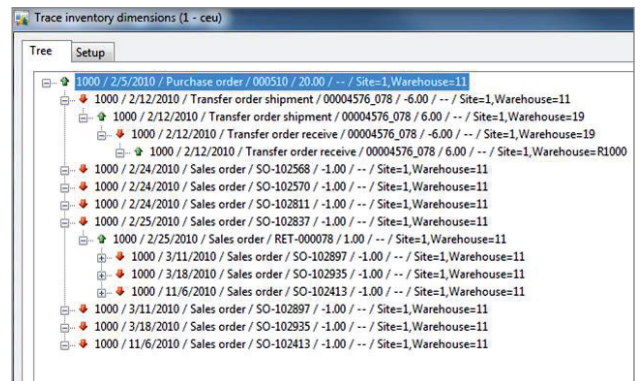
- **Responsiveness** – Advanced Lot Trace's ability to retrieve lot information and construct a history in minutes enables manufacturers to respond quickly to requests for lot information.
- **Visibility into data** – Streamlined, complete view into lot information, forward and backward in time and at a granular level
- **Reduce risk exposure** – Quickly tracing the source of implicated food helps manufacturers minimize their risk exposure by being able to act quickly and decisively.

In today's highly regulated manufacturing industry, there are several scenarios that require manufacturers to quickly and easily access lot trace data, including:

- When a customer identifies lot with contaminants in it
- A consumer identifies they have a bag, no lot, that they bought on a certain day from a certain retailer and has a contaminant
- USDA requests sources of all product produced from facility for a 14-day time span two months ago
- The supplier notifies the manufacturer of a contaminated batch and the manufacturer needs to initiate a recall

Recalls have a substantial impact on manufacturers. According to AMR Research, when a recall happens, the average cost of a write-off is \$20 million, with 14 percent of companies having write-offs in excess of \$50 million. Also, when a category has a recall, 57 percent of consumers stop buying the affected product and, in some cases, switch to a competitor's brand.

Junction Solutions' Advanced Lot Trace tool, integrated with the JunctionF/B end-to-end solution set for the Food and Beverage industry, is built in Microsoft Dynamics® AX. Advanced Lot Trace expands the standard trace capabilities in Microsoft Dynamics AX and provides a host of benefits to Food and Beverage organizations to streamline compliance efforts and respond quickly in critical business situations.



Advanced Detail Screen



Timely access to lot trace data is essential, as is having the traceability tools that enable manufacturers to rapidly pinpoint the source of a situation and allow them to quickly respond to a customer or distributor's concerns. According to an Aberdeen Group report, best-in class manufacturers have track and trace response times that are 43 hours quicker than the industry average. When it comes to the public scrutiny and spotlight

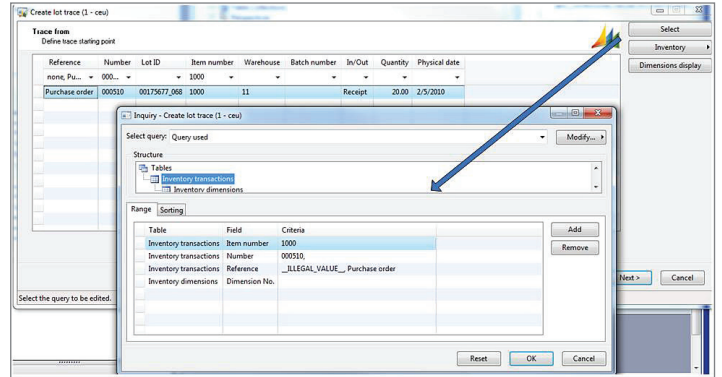
that accompanies a food safety incident, time is truly of the essence.

Typical issues Advanced Lot Trace addresses:

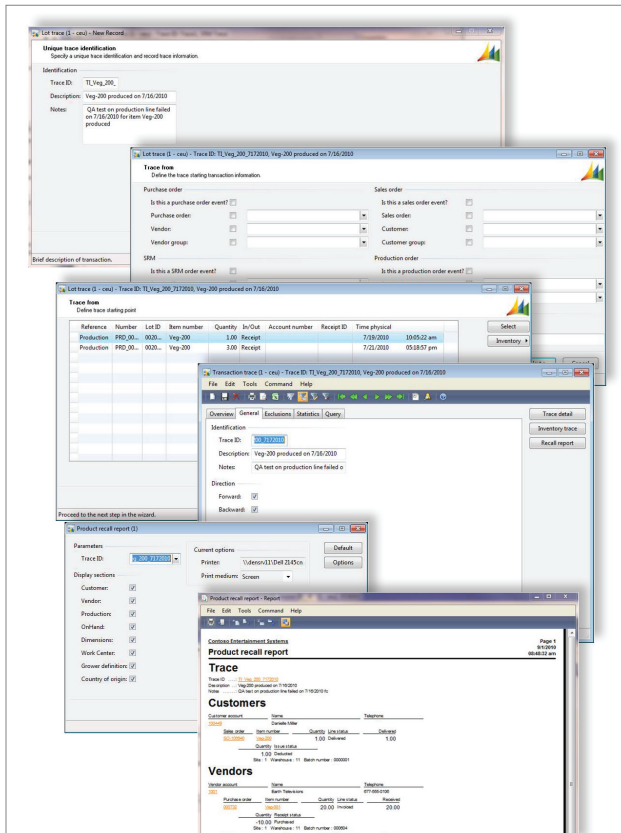
- The need for lot trace traces by date / time ranges
- A requirement for trace results to be saved for further investigation
- Overcoming initial filter / selection criteria process limitations
- Multiple RAF's for the same production order, batch are recorded as multiple transactions in DAX and make the standard lot trace tree hard to read
- The need to trace lots forward and backward
- The need to exclude transactions or items from the trace

Features of Advanced Lot Trace

- Recording of additional lot/batch attributes** – Advanced Lot Trace enables the recording of information such as Grower, Ranch, Lot (GRL), Vendor Batch, Batch Dates (shelf life, best used by, expiration, maturity date) and Country of Origin. The batch information is recorded once during the receiving process and then the system maintains this data throughout the manufacturing cycle.
- Advanced Trace Workbench** – Advanced filter capabilities enable you to initiate a trace and trace by time frame, group of products, product attributes, item and storage dimensions, and GRL.
- Fast search** – Should a problem arise, simply specifying search criteria such as GRL information and the associated date range. The trace process will retrieve the appropriate lots and construct the entire history in minutes rather than hours, allowing you to act quickly and decisively when it is needed most.
- Advanced analysis and reporting feature** – Narrow the source and distribution of implicated food. The trace results are stored and can be analyzed and reported on.



Advanced Filter for Ad-Hoc Queries



Lot Trace Wizard

- Lot Trace Wizard** – This feature is like having a traceability expert on staff. The Lot Trace Wizard provides a user-friendly way to execute a trace through a series of intuitive questions that allow the user to pinpoint a bad lot. The wizard allows for results to be saved, so information is available later to compare different runs with varying datapoints. We also understand that requirements are ever-changing. The wizard is built with the flexibility to incorporate new datapoints, even those not typically used without making any programmatic changes. Users can access standard reports or very easily create a new report to meet an agency's or customer's particular needs. Reports can be exported into Excel as a .csv or .xls file.
- Flexible and Adaptable** – Advanced Lot Trace enables manufacturers to adapt to constantly changing regulatory requirements and customer requirements without needing to make coding changes.

About Junction Solutions

Junction Solutions provides vertical-specific software applications and services that help organizations enhance operational performance, reduce costs, expand delivery channels and strengthen relationships. Built on Microsoft Dynamics® AX and designed specifically for Food & Beverage and Retail companies, Junction Solutions' innovative offerings focus on enterprise resource planning, (ERP), supply chain management (SCM – demand, order, warehouse, yard and distribution management), human capital management, merchandising, order entry management, call-center management, eCommerce engagement and fulfillment. The company recently was named 2010 Microsoft Dynamics® Retail Partner of the Year. For more information, please visit www.junctionsolutions.com.

Inspirational software and services for For Food & Beverage companies

Junction Solutions www.junctionsolutions.com | Atlanta | Chicago | Denver | Saint Louis | San Francisco Bay | United Kingdom